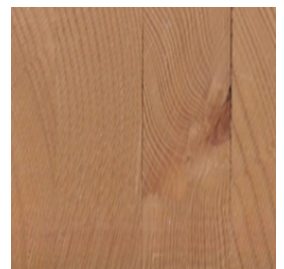




CUT LENGTHWISE



CUT CROSSWISE

VIEW

Sharp-edged milled – RAL 5022 | Night blue
BRESTA® Sharp-edged milled | RAL colors
Tschopp Holzbau AG

<https://www.tschopp-holzbau.ch> | info@tschopp-holzbau.ch

Type: Wood | Solid wood system

mtextur ID	85122
Manufacturer	Tschopp Holzbau AG
Manufacturer-Email	info@tschopp-holzbau.ch
Product Line	BRESTA® Sharp-edged milled RAL colors
Material Name	Sharp-edged milled – RAL 5022 Night blue
Type	Wood / Solid wood system
eBKP	C 4.1 Decke / C 4.1 Suspended slabs
IFC	IfcCovering / IfcSlab
Area of application (mtextur Classic)	Inside / Wall / Ceiling / Roof / Facade
Delivery zones	CH / DE / NO / LI
Size of the CAD & BIM texture	Height: 1200.0 mm / Width: 1200.0 mm

IMPORTANT LEGAL INFORMATION FOR USAGE OF THE MTEXTUR-DATABASE AND MTEXTUR DATASHEET:

In the mtextur-database and the mtextur-datasheet you can find a variety of high-quality digitalized materials, classified according material-type and subtype, color scope, field of application, manufacturer and product-line. The liability of the colors and the pattern of a CAD-texture can not always be guaranteed. For binding samples and additional questions please get in contact with the manufacturer or reseller directly (request link on material page). The information found on the mtextur-database is carefully collected and tested. Nevertheless are there possibilities for mistakes or wrong information. The publisher, h2c GmbH, the according manufacturers and resellers are not liable for any missing or incorrect information and its outcome, except h2c GmbH acts insofar willful.

IMPORTANT LEGAL INFORMATION FOR USAGE OF THE MTEXTUR-DATABASE AND MTEXTUR DATASHEET:

In the mtextur-database and the mtextur-datasheet you can find a variety of high-quality digitalized materials, classified according material-type and subtype, color scope, field of application, manufacturer and product-line. The liability of the colors and the pattern of a CAD-texture can not always be guaranteed. For binding samples and additional questions please get in contact with the manufacturer or reseller directly (request link on material page). The information found on the mtextur-database is carefully collected and tested. Nevertheless are there possibilities for mistakes or wrong information. The publisher, h2c GmbH, the according manufacturers and resellers are not liable for any missing or incorrect information and its outcome, except h2c GmbH acts insofar willful.