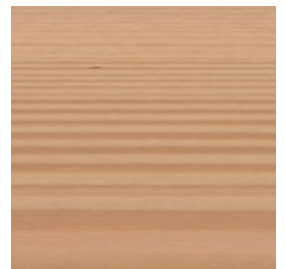
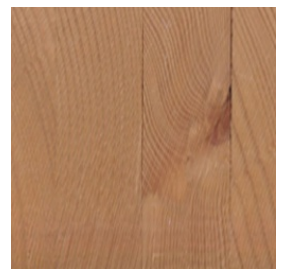




ALZADO



CORTE LONGITUDINAL



CORTE TRANSVERSAL

Scharfkant gefräst – RAL 9010 | Reinweiß
BRESTA® Scharfkant gefräst | RAL Farben
Tschopp Holzbau AG

<https://www.tschopp-holzbau.ch> | info@tschopp-holzbau.ch

Tipo material: **Madera | Sistema de madera maciza**

BRESTA® verbindet Ökologie mit moderner Architektur. Das natürliche Massivholzsystem kommt ohne Leim und Metall aus und ist in der Anwendung sehr vielseitig. Sie können für Ihre Wände, Decken, Böden und Dächer aus verschiedenen Oberflächen und Brettprofilen wählen.

mtextur ID	85543
Fabricante	Tschopp Holzbau AG
Email fabricante	info@tschopp-holzbau.ch
Línea de producto	BRESTA® Scharfkant gefräst RAL Farben
Detalles línea del producto	BRESTA® verbindet Ökologie mit moderner Architektur. Das natürliche Massivholzsystem kommt ohne Leim und Metall aus und ist in der Anwendung sehr vielseitig. Sie können für Ihre Wände, Decken, Böden und Dächer aus verschiedenen Oberflächen und Brettprofilen wählen.
Nombre material	Scharfkant gefräst – RAL 9010 Reinweiß
Tipo material	Madera / Sistema de madera maciza
eBKP	C 4.1 Decke / C 4.1 Suspended slabs
IFC	IfcCovering / IfcSlab
Área de aplicación (mtextur Classic)	Interior / Pared / Techo / Techo / Fachada
Zonas de entrega	CH / DE / NO / LI
Tamaño de la textura CAD y BIM	Altura: 1200.0 mm / Anchura: 1200.0 mm

IMPORTANT LEGAL INFORMATION FOR USAGE OF THE MTEXTUR-DATABASE AND MTEXTUR DATASHEET:

In the mtextur-database and the mtextur-datasheet you can find a variety of high-quality digitalized materials, classified according material-type and subtype, color scope, field of application, manufacturer and product-line. The liability of the colors and the pattern of a CAD-texture can not always be guaranteed. For binding samples and additional questions please get in contact with the manufacturer or reseller directly (request link on material page). The information found on the mtextur-database is carefully collected and tested. Nevertheless are there possibilities for mistakes or wrong information. The publisher, h2c GmbH, the according manufacturers and resellers are not liable for any missing or incorrect information and its outcome, except h2c GmbH acts insofar willful.

IMPORTANT LEGAL INFORMATION FOR USAGE OF THE MTEXTUR-DATABASE AND MTEXTUR DATASHEET:

In the mtextur-database and the mtextur-datasheet you can find a variety of high-quality digitalized materials, classified according material-type and subtype, color scope, field of application, manufacturer and product-line. The liability of the colors and the pattern of a CAD-texture can not always be guaranteed. For binding samples and additional questions please get in contact with the manufacturer or reseller directly (request link on material page). The information found on the mtextur-database is carefully collected and tested. Nevertheless are there possibilities for mistakes or wrong information. The publisher, h2c GmbH, the according manufacturers and resellers are not liable for any missing or incorrect information and its outcome, except h2c GmbH acts insofar willful.