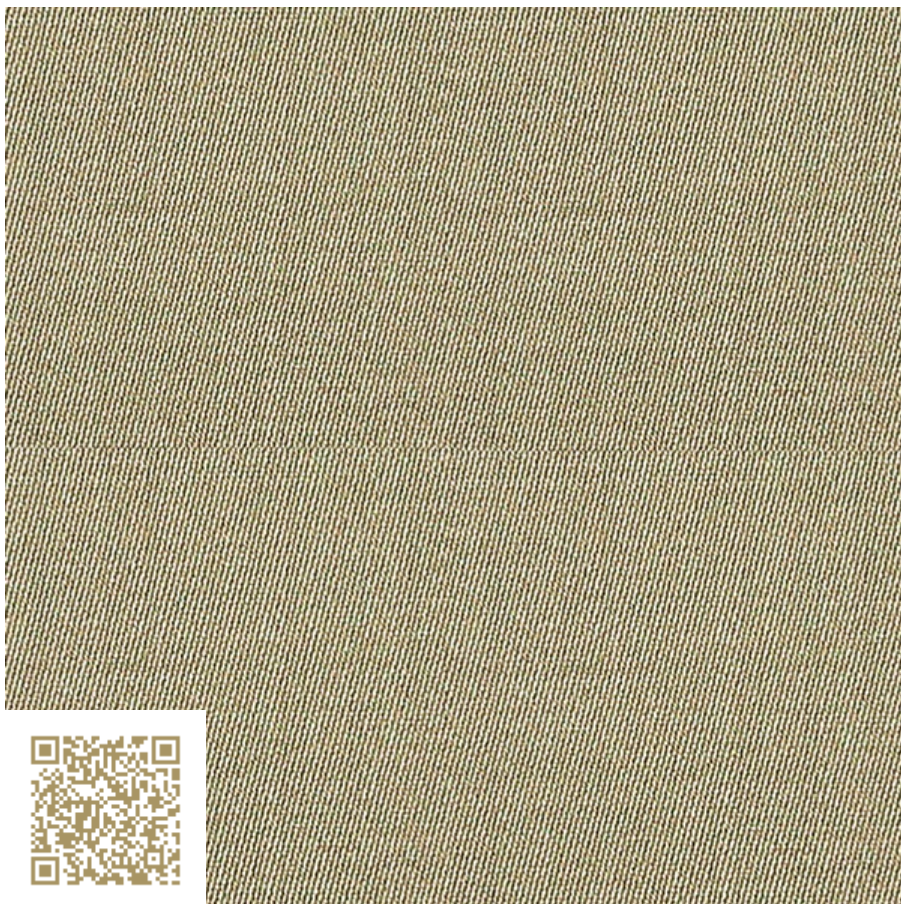


**CRÉATION  
BAUMANN**

VIEW

**Col. 0417**  
**LERIDA IV**  
**Création Baumann**

<https://www.creationbaumann.com/> | [mail@creationbaumann.com](mailto:mail@creationbaumann.com)

**Type:**    **Curtain fabric | Dense**

100% Polyester flammhemmend (Trevira CS)

Hochwertiger Dekorationsstoff in Trevira CS. Der Stückfärber in Satinbindung glänzt elegant. Der bekannte Klassiker ist sehr vielseitig einsetzbar und in 37 modischen Nuancen erhältlich.

mtextur ID	90640
Manufacturer	Création Baumann
Manufacturer-Email	<a href="mailto:mail@creationbaumann.com">mail@creationbaumann.com</a>
Product Line	LERIDA IV
Product Line Info	Hochwertiger Dekorationsstoff in Trevira CS. Der Stückfärber in Satinbindung glänzt elegant. Der bekannte Klassiker ist sehr vielseitig einsetzbar und in 37 modischen Nuancen erhältlich.
Material Name	Col. 041Z
Type	Curtain fabric / Dense
Material Info	100% Polyester flammhemmend (Trevira CS)
IFC	IfcCovering / IfcFurniture / IfcWall
Area of application (mtextur Classic)	Inside / Wall / Furniture
Delivery zones	CH / DE / AT / LI

#### IMPORTANT LEGAL INFORMATION FOR USAGE OF THE MTEXTUR-DATABASE AND MTEXTUR DATASHEET:

In the mtextur-database and the mtextur-datasheet you can find a variety of high-quality digitalized materials, classified according material-type and subtype, color scope, field of application, manufacturer and product-line. The liability of the colors and the pattern of a CAD-texture can not always be guaranteed. For binding samples and additional questions please get in contact with the manufacturer or reseller directly (request link on material page). The information found on the mtextur-database is carefully collected and tested. Nevertheless are there possibilities for mistakes or wrong information. The publisher, h2c GmbH, the according manufacturers and resellers are not liable for any missing or incorrect information and its outcome, except h2c GmbH acts insofar willful.

max. Length / Format	Width = 1500 mm
Weight	0.194 kg/m <sup>2</sup>
Sound absorption	0.7 $\alpha_w$
Characteristics Info	Dichte Vorhangstoffe von Création Baumann sorgen im öffentlichen wie im privaten Bereich für anspruchsvolle Diskretion. Unser umfangreiches Sortiment an hochwertigen Textilien bietet Ihnen ideale Lösungen zum Schutz der Privatsphäre. Und steigert das Wohlbefinden in zeitlosem Design.

**IMPORTANT LEGAL INFORMATION FOR USAGE OF THE MTEXTUR-DATABASE AND MTEXTUR DATASHEET:**

In the mtextur-database and the mtextur-datasheet you can find a variety of high-quality digitalized materials, classified according material-type and subtype, color scope, field of application, manufacturer and product-line. The liability of the colors and the pattern of a CAD-texture can not always be guaranteed. For binding samples and additional questions please get in contact with the manufacturer or reseller directly (request link on material page). The information found on the mtextur-database is carefully collected and tested. Nevertheless are there possibilities for mistakes or wrong information. The publisher, h2c GmbH, the according manufacturers and resellers are not liable for any missing or incorrect information and its outcome, except h2c GmbH acts insofar willful.