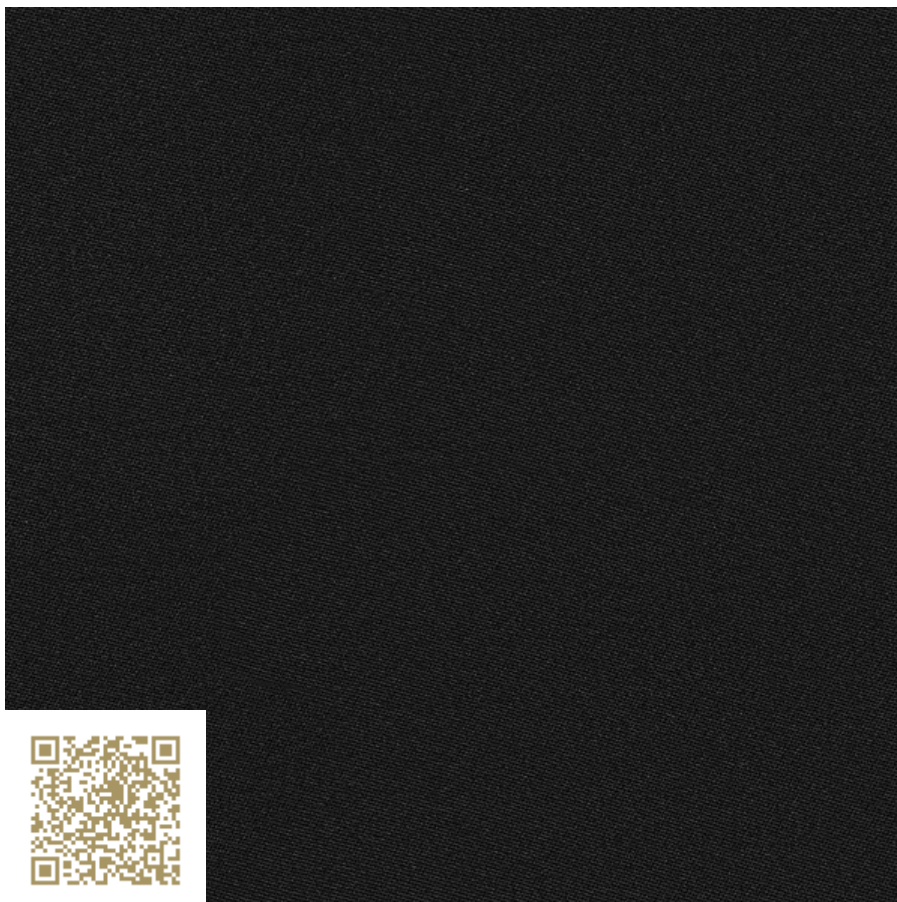


**CRÉATION  
BAUMANN**

VIEW

**Col. 0309**  
**PHANTOM PLUS II**  
**Création Baumann**

<https://www.creationbaumann.com/> | [mail@creationbaumann.com](mailto:mail@creationbaumann.com)

**Type:**     **Curtain fabric | Blackout fabric**

100% Polyester flammhemmend

Verdunkelungsstoff in 310 cm Breite. Klassische, doppelseitige Satinbindung mit schlichter, matt schimmernder Oberfläche. Der weich fallende Dimout mit angenehmer Haptik lässt sich gut verarbeiten und überzeugt mit zeitlosem, elegantem Look. Die umfangreiche Farbpalette beinhaltet zahlreiche neutrale sowie elegante, gedeckte Farbtöne.

|                                       |                                                                                                                                                                                                                                                                                                                                                  |
|---------------------------------------|--------------------------------------------------------------------------------------------------------------------------------------------------------------------------------------------------------------------------------------------------------------------------------------------------------------------------------------------------|
| mtextur ID                            | 90898                                                                                                                                                                                                                                                                                                                                            |
| Manufacturer                          | <u>Création Baumann</u>                                                                                                                                                                                                                                                                                                                          |
| Manufacturer-Email                    | <u>mail@creationbaumann.com</u>                                                                                                                                                                                                                                                                                                                  |
| Product Line                          | <u>PHANTOM PLUS II</u>                                                                                                                                                                                                                                                                                                                           |
| Product Line Info                     | Verdunkelungsstoff in 310 cm Breite. Klassische, doppelseitige Satinbindung mit schlichter, matt schimmernder Oberfläche. Der weich fallende Dimout mit angenehmer Haptik lässt sich gut verarbeiten und überzeugt mit zeitlosem, elegantem Look. Die umfangreiche Farbpalette beinhaltet zahlreiche neutrale sowie elegante, gedeckte Farbtöne. |
| Material Name                         | <u>Col. 0309</u>                                                                                                                                                                                                                                                                                                                                 |
| Type                                  | Curtain fabric / Blackout fabric                                                                                                                                                                                                                                                                                                                 |
| Material Info                         | 100% Polyester flammhemmend                                                                                                                                                                                                                                                                                                                      |
| IFC                                   | IfcCovering / IfcFurniture / IfcWall                                                                                                                                                                                                                                                                                                             |
| Area of application (mtextur Classic) | Inside / Wall / Furniture                                                                                                                                                                                                                                                                                                                        |
| Delivery zones                        | CH / DE / AT / LI                                                                                                                                                                                                                                                                                                                                |

#### IMPORTANT LEGAL INFORMATION FOR USAGE OF THE MTEXTUR-DATABASE AND MTEXTUR DATASHEET:

In the mtextur-database and the mtextur-datasheet you can find a variety of high-quality digitalized materials, classified according material-type and subtype, color scope, field of application, manufacturer and product-line. The liability of the colors and the pattern of a CAD-texture can not always be guaranteed. For binding samples and additional questions please get in contact with the manufacturer or reseller directly (request link on material page). The information found on the mtextur-database is carefully collected and tested. Nevertheless are there possibilities for mistakes or wrong information. The publisher, h2c GmbH, the according manufacturers and resellers are not liable for any missing or incorrect information and its outcome, except h2c GmbH acts insofar willful.

|                      |                                                                                                                                                                                                                                                                                                                                                                                                                            |
|----------------------|----------------------------------------------------------------------------------------------------------------------------------------------------------------------------------------------------------------------------------------------------------------------------------------------------------------------------------------------------------------------------------------------------------------------------|
| max. Length / Format | Width = 3100 mm                                                                                                                                                                                                                                                                                                                                                                                                            |
| Weight               | 0.202 kg/m <sup>2</sup>                                                                                                                                                                                                                                                                                                                                                                                                    |
| Sound absorption     | 0.6 $\alpha_w$                                                                                                                                                                                                                                                                                                                                                                                                             |
| Lightfastness        | 5                                                                                                                                                                                                                                                                                                                                                                                                                          |
| Characteristics Info | Tag und Nacht, sehen und verbergen – wie in der Natur gehören diese Kontraste auch bei der Inneneinrichtung untrennbar zusammen. Die vielseitigen Lösungen für die textile Lichtsteuerung von Création Baumann schaffen eine nuancenreiche Wechselwirkung von Hell und Dunkel. Sie verleihen spannende Konturen, machen Formen sichtbar und prägen damit den Erlebniswert einer modernen Raumarchitektur entscheidend mit. |

**IMPORTANT LEGAL INFORMATION FOR USAGE OF THE MTEXTUR-DATABASE AND MTEXTUR DATASHEET:**

In the mtextur-database and the mtextur-datasheet you can find a variety of high-quality digitalized materials, classified according material-type and subtype, color scope, field of application, manufacturer and product-line. The liability of the colors and the pattern of a CAD-texture can not always be guaranteed. For binding samples and additional questions please get in contact with the manufacturer or reseller directly (request link on material page). The information found on the mtextur-database is carefully collected and tested. Nevertheless are there possibilities for mistakes or wrong information. The publisher, h2c GmbH, the according manufacturers and resellers are not liable for any missing or incorrect information and its outcome, except h2c GmbH acts insofar willful.