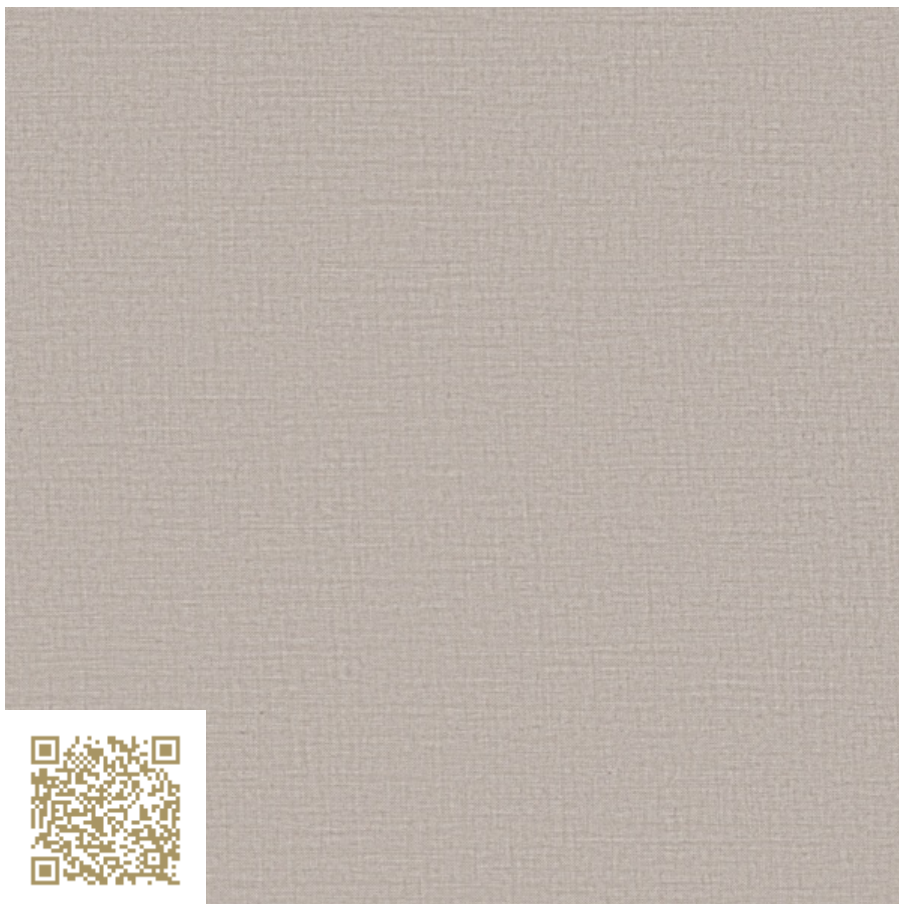


**CRÉATION
BAUMANN**

VIEW

Col. 1060
SINFONIA CS VI
Création Baumann

<https://www.creationbaumann.com/> | mail@creationbaumann.com

Type: **Curtain fabric | Transparent**

100% Polyester flammhemmend (Trevira CS)

Transparenter Vorhangstoff; Elegante, natürliche, weich fallende und pflegeleichte Qualität aus Trevira CS. Der Klassiker und Bestseller mit seiner umfassenden, systematisch aufgebauten Farbpalette wird mit neuester Produktionstechnik wasser- und energiesparend in Langenthal hergestellt.

| | |
|---------------------------------------|--|
| mtextur ID | 92561 |
| Manufacturer | Création Baumann |
| Manufacturer-Email | mail@creationbaumann.com |
| Product Line | SINFONIA CS VI |
| Product Line Info | Transparenter Vorhangstoff; Elegante, natürliche, weich fallende und pflegeleichte Qualität aus Trevira CS. Der Klassiker und Bestseller mit seiner umfassenden, systematisch aufgebauten Farbpalette wird mit neuester Produktionstechnik wasser- und energiesparend in Langenthal hergestellt. |
| Material Name | Col. 1060 |
| Type | Curtain fabric / Transparent |
| Material Info | 100% Polyester flammhemmend (Trevira CS) |
| IFC | IfcCovering / IfcFurniture / IfcWall |
| Area of application (mtextur Classic) | Inside / Furniture |
| Delivery zones | CH / DE / AT / LI |

IMPORTANT LEGAL INFORMATION FOR USAGE OF THE MTEXTUR-DATABASE AND MTEXTUR DATASHEET:

In the mtextur-database and the mtextur-datasheet you can find a variety of high-quality digitalized materials, classified according material-type and subtype, color scope, field of application, manufacturer and product-line. The liability of the colors and the pattern of a CAD-texture can not always be guaranteed. For binding samples and additional questions please get in contact with the manufacturer or reseller directly (request link on material page). The information found on the mtextur-database is carefully collected and tested. Nevertheless are there possibilities for mistakes or wrong information. The publisher, h2c GmbH, the according manufacturers and resellers are not liable for any missing or incorrect information and its outcome, except h2c GmbH acts insofar willful.

| | |
|----------------------|---|
| max. Length / Format | Width = 3000 mm |
| Weight | 0.074 kg/m ² |
| Sound absorption | 0.6 α_w |
| Lightfastness | 5-6 |
| Characteristics Info | Transparente Vorhangstoffe von Création Baumann erweitern das Spiel mit Räumen und Blicken um neue Dimensionen. Unsere innovativen Textilien bringen Struktur und Flexibilität in eine Innenarchitektur, die auf immer weniger Trennwände und immer mehr Offenheit setzt. Dank der reichen Auswahl an Qualitätsstoffen sind Ihren Wünschen an Form, Farbe, Funktion und Griff so gut wie keine Grenzen gesetzt. |

IMPORTANT LEGAL INFORMATION FOR USAGE OF THE MTEXTUR-DATABASE AND MTEXTUR DATASHEET:

In the mtextur-database and the mtextur-datasheet you can find a variety of high-quality digitalized materials, classified according material-type and subtype, color scope, field of application, manufacturer and product-line. The liability of the colors and the pattern of a CAD-texture can not always be guaranteed. For binding samples and additional questions please get in contact with the manufacturer or reseller directly (request link on material page). The information found on the mtextur-database is carefully collected and tested. Nevertheless are there possibilities for mistakes or wrong information. The publisher, h2c GmbH, the according manufacturers and resellers are not liable for any missing or incorrect information and its outcome, except h2c GmbH acts insofar willful.