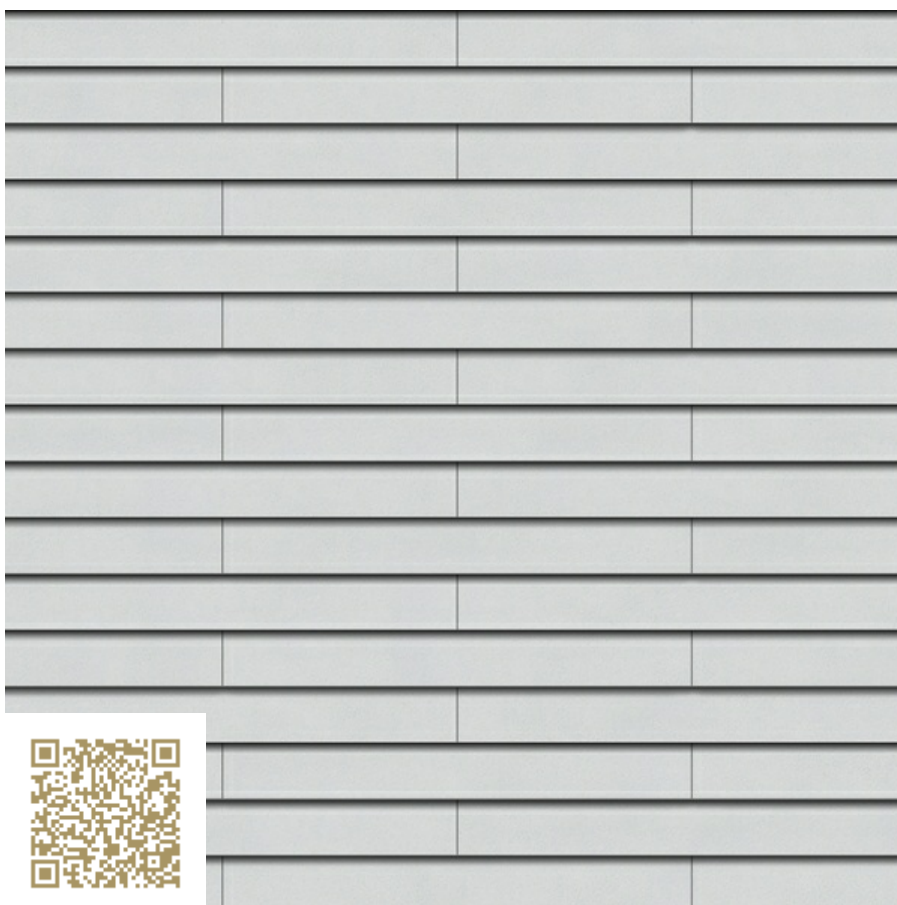


**SWISS
pearl®**

VIEW

NOBILIS Crystal 124

MODULA 2500x300

Swisspearl Schweiz AG

<https://www.swisspearl.ch/> | info@ch.swisspearl.com

Type: Fiber cement | Facade slate

The horizontal Modula structure has a fine architectonic rhythm. The slim panels, available in two different lengths, are installed as lapped coverings and can be arranged both with continuous and with offset vertical joints. A large number of different surfaces and colors enable numerous additional design variants.

Whether monochrome or multicolored, equal or varying format lengths, with continuous or offset joints – Modula provides immense scope for individual combinations.

mtextur ID	96667
Manufacturer	Swisspearl Schweiz AG
Manufacturer-Email	info@ch.swisspearl.com
Product Line	MODULA 2500x300
Product Line Info	<p>The horizontal Modula structure has a fine architectonic rhythm. The slim panels, available in two different lengths, are installed as lapped coverings and can be arranged both with continuous and with offset vertical joints. A large number of different surfaces and colors enable numerous additional design variants.</p> <p>Whether monochrome or multicolored, equal or varying format lengths, with continuous or offset joints – Modula provides immense scope for individual combinations.</p>
Material Name	NOBILIS Crystal 124
Type	Fiber cement / Facade slate
eBKP	E 2.3 Facade cladding / E 2.3 Fassadenbekleidung / E 2.4 Facade systems / E 2.4 Fassadensystem
IFC	IfcCovering / IfcCurtainWall
Area of application (mtextur Classic)	Outside / Wall / Facade
Delivery zones	CH / DE / AT / CA / US / LI / SI

IMPORTANT LEGAL INFORMATION FOR USAGE OF THE MTEXTUR-DATABASE AND MTEXTUR DATASHEET:

In the mtextur-database and the mtextur-datasheet you can find a variety of high-quality digitalized materials, classified according material-type and subtype, color scope, field of application, manufacturer and product-line. The liability of the colors and the pattern of a CAD-texture can not always be guaranteed. For binding samples and additional questions please get in contact with the manufacturer or reseller directly (request link on material page). The information found on the mtextur-database is carefully collected and tested. Nevertheless are there possibilities for mistakes or wrong information. The publisher, h2c GmbH, the according manufacturers and resellers are not liable for any missing or incorrect information and its outcome, except h2c GmbH acts insofar willful.

max. Length / Format	Length = 2500 mm / Width = 300 mm / Thickness = 8 mm
min. Format	Length = 1500 mm / Width = 300 mm / Thickness = 8 mm
Characteristics Info	Lasierende Farben in anmutigen noblen Grautönen

IMPORTANT LEGAL INFORMATION FOR USAGE OF THE MTEXTUR-DATABASE AND MTEXTUR DATASHEET:

In the mtextur-database and the mtextur-datasheet you can find a variety of high-quality digitalized materials, classified according material-type and subtype, color scope, field of application, manufacturer and product-line. The liability of the colors and the pattern of a CAD-texture can not always be guaranteed. For binding samples and additional questions please get in contact with the manufacturer or reseller directly (request link on material page). The information found on the mtextur-database is carefully collected and tested. Nevertheless are there possibilities for mistakes or wrong information. The publisher, h2c GmbH, the according manufacturers and resellers are not liable for any missing or incorrect information and its outcome, except h2c GmbH acts insofar willful.